

SG2



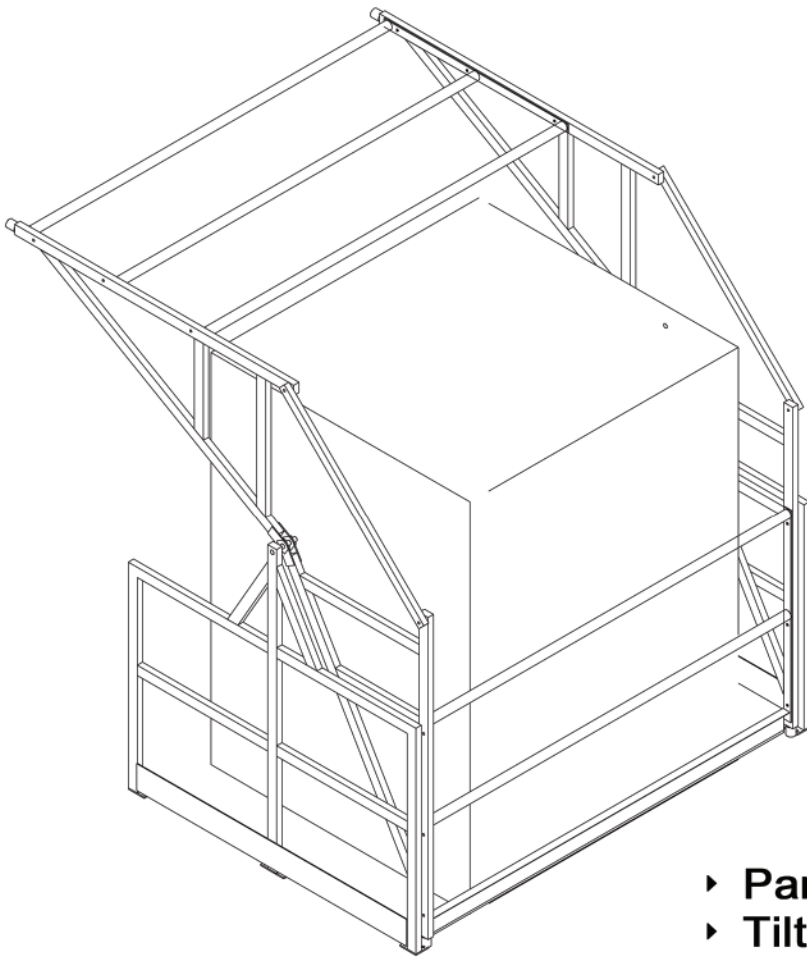
For what kind of work situations?

- ▶ Implantations with no particular constraints.
- ▶ Mezzanines with sufficient height and depth.



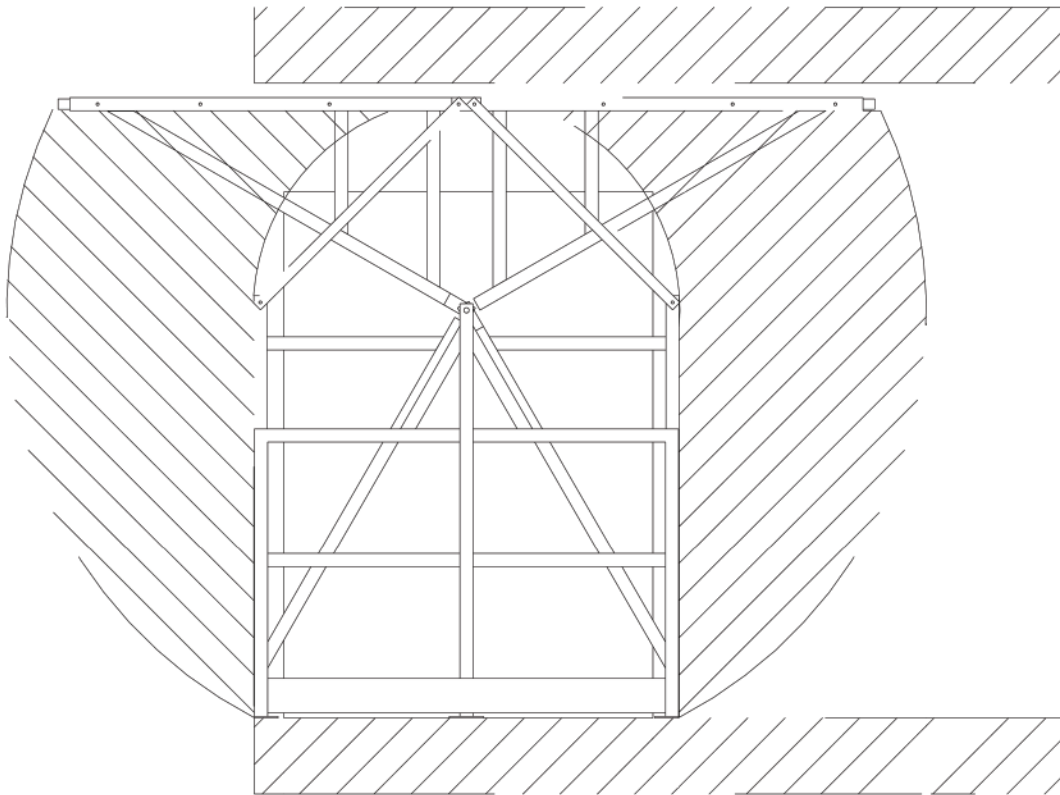
Z.A. la Métairie - Rue du Val d'Ardoux - F-45370 DRY
www.ac2m-sarl.fr +33 (0)2 38 59 97 99 ac2m@ac2m-sarl.fr

BE SAFE
Ac2M®



SG2

- ▶ Particularly robust construction.
- ▶ Tilting principle.
- ▶ Made-to-measure design.



Z.A. la Métairie - Rue du Val d'Ardoux - F-45370 DRY
www.ac2m-sarl.fr +33 (0)2 38 59 97 99 ac2m@ac2m-sarl.fr

Ac2M[®] *BE SAFE*